

## Driver Safe Zones

The Driver Safe Zone is the cab area to the front of the vehicle on the side where the hoist driver is loading / unloading.

Do not approach the forklift driver unless he has left the machine, always make eye contact with drivers near you and maintain a 3 meter distance from forklifts and other moving vehicles.

It is a busy yard, always be aware the forklifts are moving continually.

## Passengers

As Mondiale Freight Services is a high risk industrial environment with multiple hazards, the management discourages Carriers bringing passengers on to site. You must advise the Forklift / Container Hoist driver of the other persons presence and ensure the passenger/s do not leave vehicle.

## Animals

You must not bring animals on to site due to Mondiale's RMP certification.

## Accident and Incident Reporting

All injuries (no matter how small) hazards, near misses, spillage of oil or chemical and unsafe conditions, involving people or equipment damage must be reported to the Release Window Centre prior to leaving the site.

## Site Evacuation

In the event of an evacuation alarm being raised move to the evacuation assembly point outside **Exit Gate 10**.

## Operating Hours

**MFS: 7.30 am to 5.30 pm Mon - Fri.**

**MWD: 8.30 am to 5.00 pm Mon - Fri.**

After hours and weekends by prior arrangement.

## Procedure on Arrival

Please report to the Release Centre Window to process paperwork and receive instructions. (see MAP over page for location of Release Centre Window and site info)

### Please have the following ready:

#### Export Sea freight

- Carters note with the Mondiale booking reference

#### Import Sea freight

- Mondiale Delivery Order (if required)
- Customs Delivery Order
- All other relevant paperwork for your consignment e.g. MPI release etc

## Pallets

Mondiale operate on "Pallet for Pallet" system. Please do not be offended if the fork hoist driver requests you unload cargo from pallets.

## Site Speed Limit

The site speed limit of 10kph must not be exceeded.

## Mondiale Seafreight Release Centre:

 **09 255 3316**

 **mondialereleasecentresea@mondiale.co.nz**



**Site — 94 Montgomerie Rd.  
- Also accessed from 129 Pavilion Drive**

This site is a dual purpose site, operating both 3PL Warehousing (Mondiale Warehousing and Distribution - **MWD**) and Seafreight Container load and unload (Mondiale Freight Services - **MFS**)

The site yard is a Customs bonded, MPI, RMP certified site.

It contains heavy industrial equipment and multiple hazards.

All visitors must agree to adhere to the following procedures prior to being allowed on to the site.

At all times visitors MUST:

- Be accompanied by a staff member or
- Be in a safe zone and under the instruction of a forklift operator
- Follow all signage and vehicle safe zones

## Personal Protective Equipment and Personal Safety

The following personal protective equipment and personal safety rules apply to all visitors while in the warehouse or yard.

- Covered Shoes or Safety Boots / Shoes must be worn
- Hi-Viz vests or Hi-Viz jacket must be worn

## Mondiale Plant/Equipment

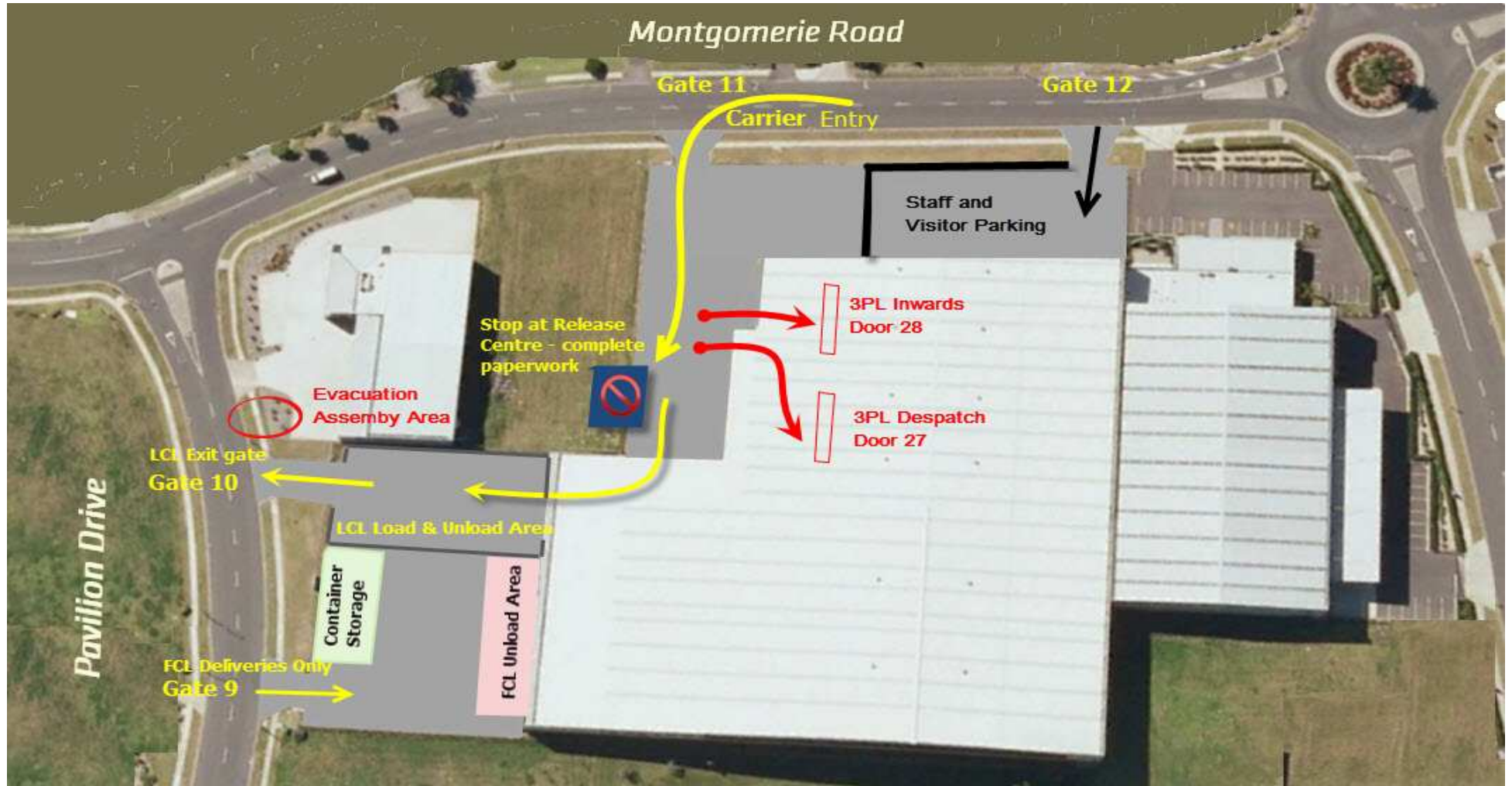
You must not operate any Mondiale equipment.

**Smoking Rules — No smoking allowed on site**



**MONDIALE**

# 94 Montgomerie Rd ( and 129 Pavilion Dr ) Site Map & Traffic flow directions – eff 15 March



**Gate 9** FCL Delivery & Pickup only  
131 Pavilion Drive

**Gate 10** Main Site exit gate  
129 Pavilion Drive

MWD — Mondiale Warehousing & Distribution Limited  
Opening Hours: 8.30 am to 5.00 pm Monday to Friday

**Gate 11** Main Carrier Entry — LCL and 3PL  
94 Montgomerie Ave

**Gate 12** Staff and Visitor Entry Only  
90 Montgomerie Rd

MFS — Mondiale Freight Services Limited  
Opening Hours: 7.30 am to 5.30 pm Monday to Friday



**MONDIALE**

**Mondiale Freight Services Limited**  
**LCL Freight Station**

**Mondiale Warehousing & Distribution Limited**

94 Montgomerie Rd, Airport Oaks, Auckland 2150